



## SAE - Automation, s.r.o. (Ltd.)

### DDE for SAEAUT UNIVERSAL OPC Server and OpcDbGateway, Version 1.00.00

Release: 1.00.00 (14<sup>th</sup> June 2012)

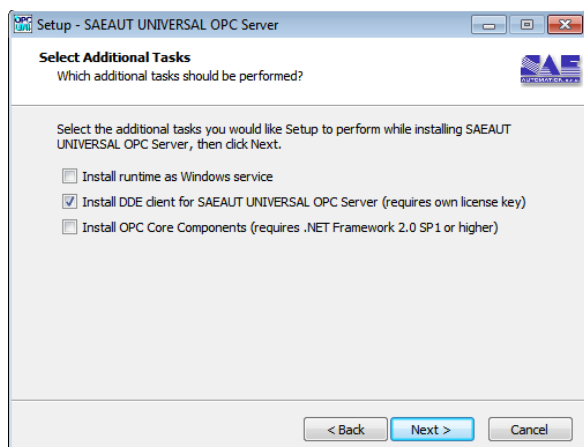
This file provides information about removed bugs, changes, file versions and location of installed files.

#### CONTENS

1. INSTALLATION .....	1
2. HOW TO UNINSTALL.....	2
The DDE functionality is automatically uninstalled by uninstalling OpcDbGateway or SAEAUT UNIVERSAL OPC Server. ....	2
3. HOW TO TEST INSTALLATION .....	2
4. HOW TO ACTIVATE YOUR PRODUCT TO FULL VERSION?.....	2
5. HOW TO TEST FUNCTIONALITY – FIRST STEPS .....	3
6. NEW FEATURES.....	3
7. CORRECTED ERRORS.....	3
8. FILELIST AND FILEINFORMATION .....	3
9. FAQ.....	4
10. KNOWN ISSUES.....	4
11. SUPPORT.....	4
12. CONTACTS .....	4

## 1. INSTALLATION

DDE client driver can be installed **within installation package of the container application** OpcDbGateway or SAEAUT UNIVERSAL OPC Server by choosing a related check box in dialog box bellow.



Please download OpcDbGateway or SAEAUT UNIVERSAL OPC Server from following locations:

OpcDbGateway - x86

[Download URL 1](#) or [Download URL 2](#)

OpcDbGateway - x64

[Download URL 1](#) or [Download URL 2](#)

SAEAUT UNIVERSAL OPC Server - x86

[Download URL 1](#) or [Download URL 2](#)

SAEAUT UNIVERSAL OPC Server - x64

[Download URL 1](#) or [Download URL 2](#)

Three types of files are installed:

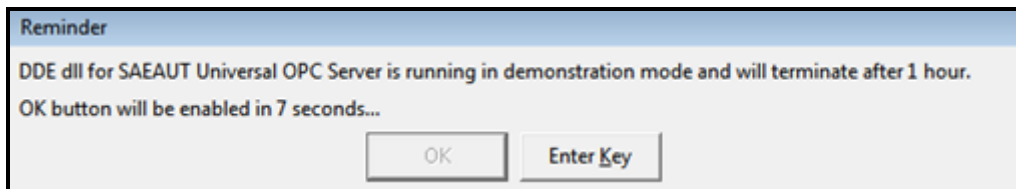
1. Files providing common DDE functionality (RuntimeDde.dll, ConfiguratorDde.dll).
2. Configuration file - *SystemToExcel.ODG*, with demo configuration demonstrating displaying of system variables in MS Excel file OPC\_Server.xls with template with description of displayed system variable, configuration file DDETestBook.ODG and DDETestBook.xlsx to test DDE functionality more deeply using MS Excel as DDE server.
3. License file, release notes and help file .

## 2. HOW TO UNINSTALL

The DDE functionality is automatically uninstalled by uninstalling OpcDbGateway or SAEAUT UNIVERSAL OPC Server.

## 3. HOW TO TEST INSTALLATION

When you start configuration application of the SAEAUT UNIVERSAL OPC Server after installation DDE you will see following reminder:



You can proceed with activating your license as described in next chapter or to test the DDE functionality as long as you like. The only limitation will be that after one hour without entering the license key the DDE functionality will be stopped. You can restart it as many times as you like to be able to test longer. The reminder above will be shown, without activation of the product, by every starting of runtime application.

## 4. HOW TO ACTIVATE YOUR PRODUCT TO FULL VERSION?

In order to activate your software product to full version you will need to enter a name and the license key. Please start the product you want to activate and click [Enter key](#) when asked about product registration. You will see the dialog window that shows [hardware fingerprint](#). Please e-mail us this fingerprint and tell us the [Name](#) under which you'd like to activate your product. Based on this information we will send you back the license key that can be used to activate your product.

To activate DDE for SAEAUT UNIVERSAL OPC Server version:

1. Install application [SAEAUT UNIVERSAL OPC Server \(OpcDbGateway\)](#) on PC where it will run.
2. Launch the [SAEAUT UNIVERSAL OPC Server Configurator](#) (Start ⇒ Program Files ⇒ [SAEAUT Universal OPC Server](#) ⇒ [SAEAUT UNIVERSAL OPC Server Configurator](#)).
3. Click on button „Enter key“.
4. Make a copy of your PC „Hardware fingerprint“ (for example: Hardware fingerprint: 2950-8AA7)
5. Please send us your „Hardware fingerprint“ to e-mail [sae-automation@saeautom.sk](mailto:sae-automation@saeautom.sk).

On the basis of your PC „Hardware fingerprint“, we will generate the valid [software license key](#) for your PC and send it back to you.

## 5. HOW TO TEST FUNCTIONALITY – FIRST STEPS

The product enables to communicate with one or more DDE servers. Details to that see, please, [in on line help file](#).

## 6. NEW FEATURES

### Version 1.00.00

- As described in [on line help file](#)

## 7. CORRECTED ERRORS

### Version 1.00.00

- N/A

## 8. FILELIST AND FILEINFORMATION

**Remark – for OpcDbGateway, replace, please, SAEAUT UNIVERSAL OPC Server with OpcDbGateway in the location description.**

### SAEAUT UNIVERSAL OPC Server

Name: RuntimeDde.dll  
Version: 1.00.0.0  
Location: \Program Files\SAEAUT UNIVERSAL OPC Server\ExternalDll\  
Description: DDE dll for runtime module of SAEAUT UNIVERSAL OPC Server application.

Name: ConfiguratorDde.dll  
Version: 1.00.0.0  
Location: \Program Files\SAEAUT UNIVERSAL OPC Server\  
Description: DDE dll for configuration application of the SAEAUT UNIVERSAL OPC Server

Name: SaeUniOpcConfigurator.exe  
Version: 4.0.0.0  
Location: ..\SAEAUT UNIVERSAL OPC Server\  
Description: The module for creating of application configurations.

Name: DDE\_Dll\_help.pdf  
Location: ..\SAEAUT UNIVERSAL OPC Server\Help\  
Description: The User's Guide for DDE functionality of SAEAUT Universal OPC Server.

### Documents

Name: DDE\_Dll\_EULA\_SAE\_ENG.pdf

Location: ..\SAEAUT UNIVERSAL OPC Server\  
Description: The software license agreement for end-user for software from company.

Name: DDE\_DIIRelnotes\_ENG.pdf  
Location: ..\SAEAUT UNIVERSAL OPC Server\  
Description: This file provides information about removed bugs, changes, file versions and location of installed files.

#### **Example configurations**

Name: SystemToExcel.ODG, DDETestBook.ODG  
Location: ...\\Users\yourName\Documents\SAEAUT UNIVERSAL OPC Server\..Configurations\DDEdI  
Description: Configurations to test DDE functionality.

Name: OPC\_Server.xls, DDETestBook.xlsx  
Location: ...\\Users\yourName\Documents\SAEAUT UNIVERSAL OPC Server\..Configurations\DDEdI\Files

Description: Files to use MS Excel as DDE server to test DDE functionality..

## **9. FAQ**

## **10. KNOWN ISSUES**

1. If a DDE server does not support using of advise loop functionality for a DDE item, the DDE item is not updated automatically. You can configure synchronous reading of the value.

## **11. SUPPORT**

Telephone: +421/ 42 4450701 (Monday - Friday: 8:00 AM - 17:00 PM )  
Fax: +421/ 42 4450702  
Email: sae-automation@saeautom.sk

## **12. CONTACTS**

SAE - Automation, s.r.o.  
Trenčianska 19  
018 51 Nová Dubnica, Slovakia  
<http://www.saeautom.sk>, [sae-automation@saeautom.sk](mailto:sae-automation@saeautom.sk)

**Copyright © 2012 SAE - Automation, s.r.o. All rights reserved.**