

HarePoint Import and Upload



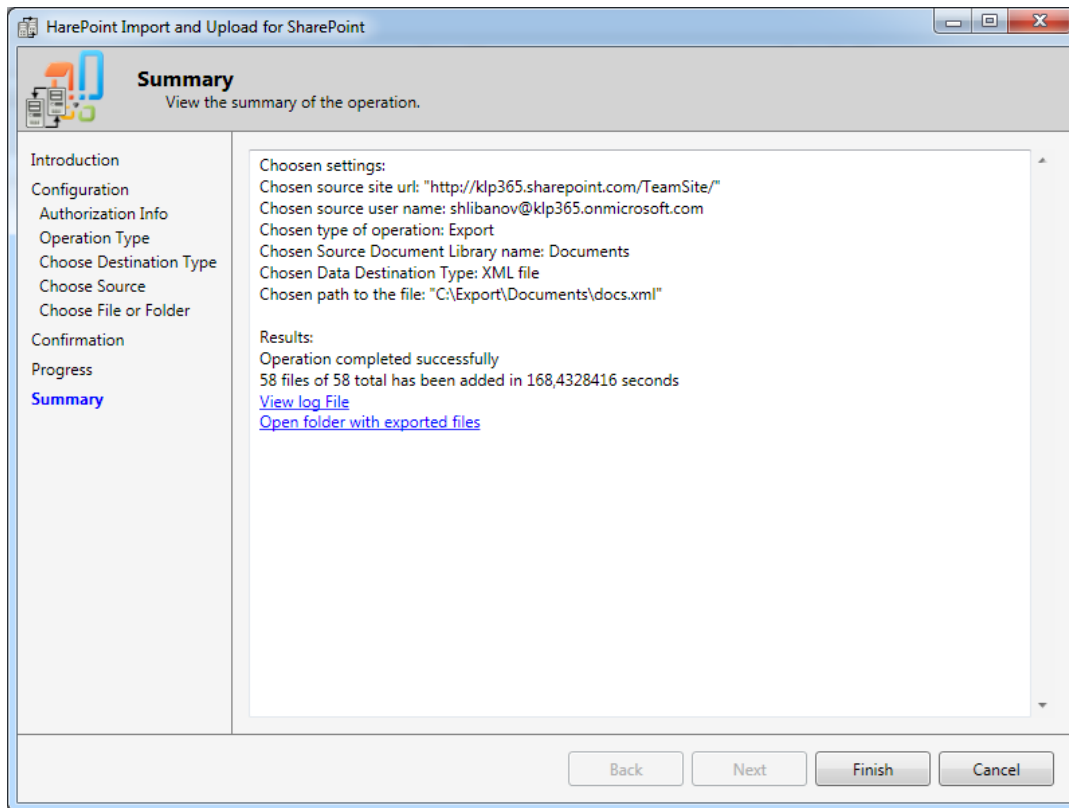
(This Page Intentionally Left Blank)

Table of Contents

Table of Contents	3
I. Introduction	4
II. Deployment.....	6
1. System requirements.....	6
2. Supported versions of Microsoft SharePoint.....	6
3. Licensing and trial limitations	7
4. Installing HarePoint Import and Upload	8
III. Product Overview	9
1. Main application	9
2. Connecting to SharePoint site.....	10
3. Choosing operation type and destination	11
4. Importing data	11
5. Exporting data.....	12
6. Mapping list fields.....	13
7. Executing import/export operation	14
8. Console helper application	15
Appendix A. Troubleshooting	16

I. Introduction

HarePoint Import and Upload for SharePoint allows you to migrate (import/export and upload/download) data between SharePoint sites, as well as between SharePoint document libraries and the file system. The product lets you can easily import documents, files and list items.



These data can be moved to existing document libraries or lists, or into new ones, all while preserving the needed attributes (views, permissions, etc.).

The data transfer process is very simple: you just select the data, indicate the targeted SharePoint site and document library or list name, and configure the migration parameters (for example: whether to rewrite existing files, preserve permissions, etc.).

The product supports Office 365, allowing you to upload/download data to and from SharePoint Online.











The additional command-line interface provides the ability to automate the process of data migration, that is, to set a schedule for migration.

We also recommend you to pay attention to the following products of our company:

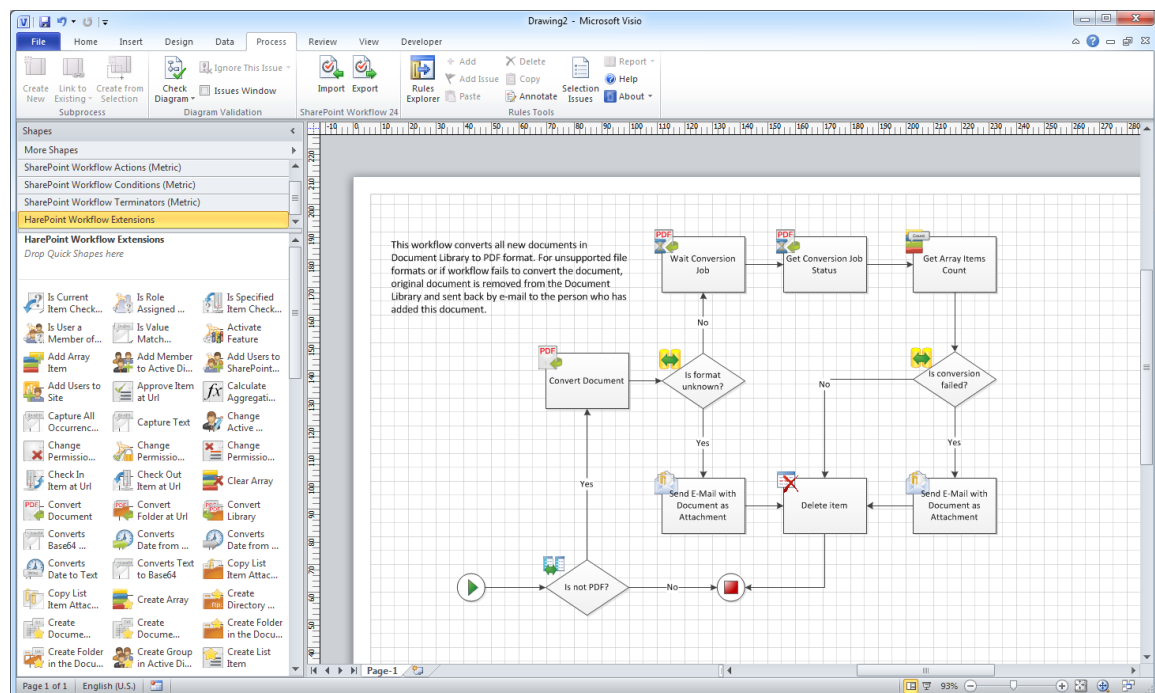
- **HarePoint Workflow Scheduler for SharePoint 2010** is a free software product that allows automatic execution of SharePoint workflows by schedule. With its help, you can automate

recurring business processes, debug your workflows with various sets of parameters, test server's performance by starting workflows with specified frequency.

The product supports declarative workflows (created in Microsoft SharePoint Designer) and Visual Studio workflows. It supports both site and list workflows and allows launching workflow for every document or list item, for manually selected item or for items selected by CAML query. HarePoint Workflow Scheduler is fully compatible with parameters.

Task Name	Enabled	Workflow Name	List Name	Triggers
Generate Invoices 	Yes	GenerateInvoice	Orders	At 45 minute every hour
Update Profiles 	Yes	UpdateProfile		At 3:30 AM every day
 Run now  Disable  View Item  Edit Item  Alert Me  Manage Permissions  Delete Item	No	ConvertDocs	Docs	At 30 minute every 3 hours
	Yes	Report	Orders	At Mon in 12:10 AM every week
	Yes	Report	Orders	At 1st day 5:46 PM every month
	No	ConvertImages	Photos	At 10/19/2011 12:30 AM
	Yes	Reminder		At 8:30 AM every day
	Yes	Report	Orders	At 10/10/2011 5:50 PM
 Add new item				

- **HarePoint Workflow Extensions for SharePoint 2010** provides over 180 new 'ready-to-use' activities for SharePoint workflow development. The product is fully supported by all Microsoft workflow development tools and there is no need to migrate and adapt current workflows to a new development environment, or to master and deploy new development tools. You can benefit from the power of the product in SharePoint Designer 2010, Microsoft Visual Studio 2010, and in Microsoft Visio 2010.



You will find the information on these products, as well as trial versions at www.harepoint.com.

II. Deployment

1. System requirements

HarePoint Import and Upload for SharePoint is a desktop application that can run on the following versions of Microsoft Windows operating system:

- Microsoft Windows Server 2003 with SP1 or higher;
- Windows Server 2003 R2;
- Windows Server 2008;
- Windows Server 2008 R2;
- Windows XP with SP2 or higher;
- Windows Vista;
- Windows 7.

The Product is also compatible with the following operating systems:

- Microsoft Small Business Server with SP1 or higher;
- Windows Small Business Server 2003 R2;
- Windows Small Business Server 2008;
- Windows Essential Business Server 2008;
- Windows Small Business Server 2011.

32-bit and 64-bit versions of the abovementioned systems are supported.

Microsoft .NET Framework v3.5 or higher is required before performing installation of HarePoint Import and Upload for SharePoint. Microsoft .NET Framework v3.5 or higher is the component of Microsoft Windows Server 2008, Windows Server 2008R2, Windows 7, and Windows Vista. In case of other operating systems the platform can be downloaded from the Microsoft [download center](#).

2. Supported versions of Microsoft SharePoint

HarePoint Import and Upload for SharePoint is designed to work with:

- Microsoft SharePoint Server 2010,
- SharePoint Foundation 2010,
- Microsoft Office 365 / SharePoint Online.

3. Licensing and trial limitations

HarePoint Import and Upload for SharePoint is licensed for a number of seats. Seat - is the user who has access to the Product inside the company's environment.

You may use the Product on the basis of one of two licenses:

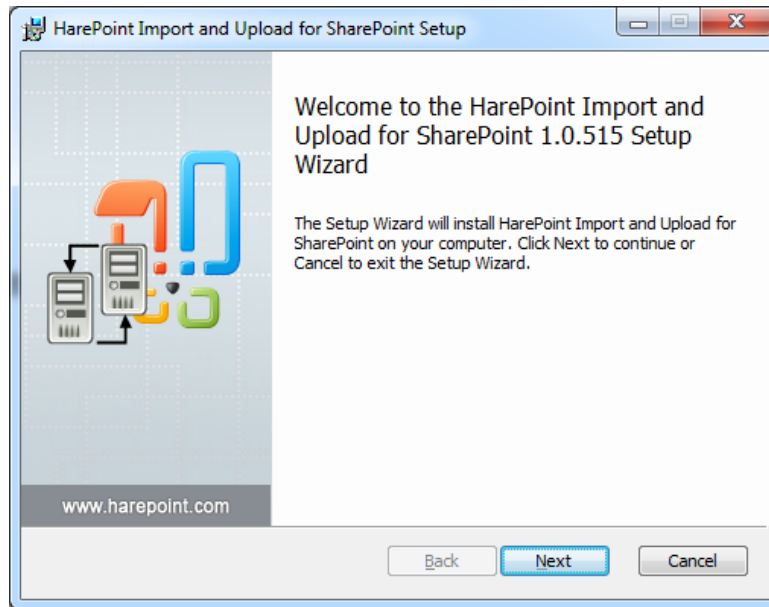
1. **Trial License.** Provided automatically for a 30-day period to use the Product in organization's environment without any limitations of Product functionality.
2. **Commercial License.** This license is purchased for a number of seats and allows using the Product in the organization's environment without limitation by usage time and functionality.

Note that after purchasing of Commercial License and entering registration key product becomes fully functional.

See product page at <http://www.harepoint.com/> for more details about Product licensing.

4. Installing HarePoint Import and Upload

To install the product simply run **HarePointImportUpload.msi** from the program package and follow installation wizard steps.



You can install the product on any computer in your organization which has access to the target SharePoint sites. Please note that some features are only available if the program is running on the server where SharePoint is installed.

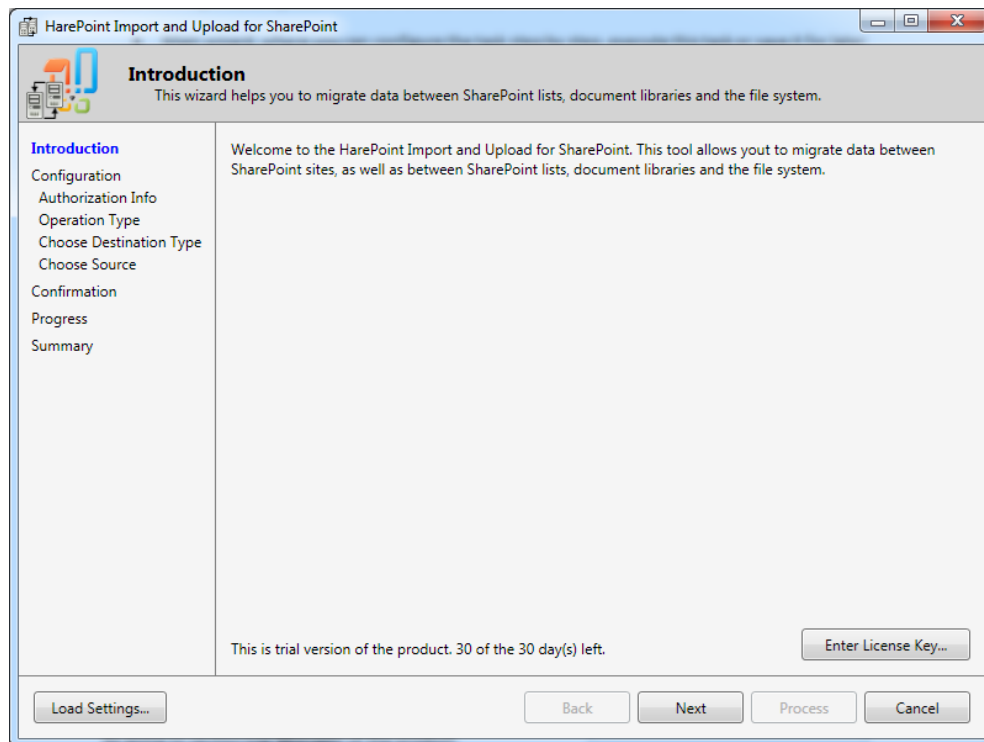
After installation the Product is ready to work. See the Section III of this manual for the Product overview.

III. Product Overview

HarePoint Import and Upload for SharePoint consists of two software modules:

- Main application is a wizard, where you can configure the task step by step, execute this task or save it for later usage.
- Console helper application (HPIUConsole.exe) that is used to automatically launch tasks or to run by a schedule.

1. Main application

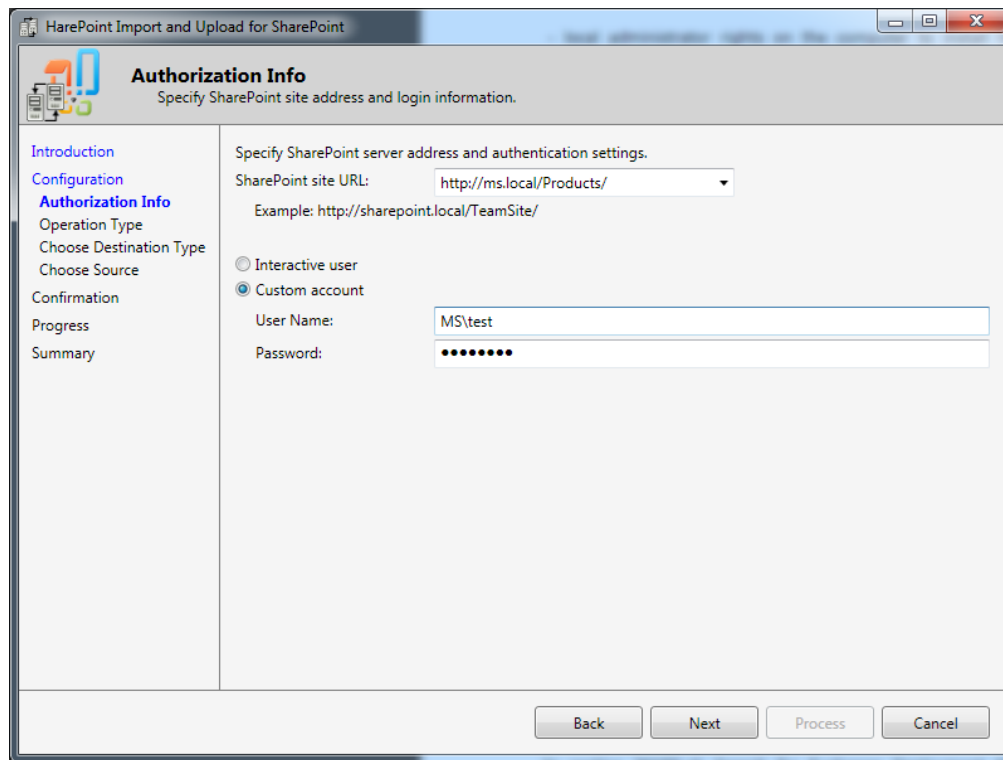


On the welcome screen of the main application wizard you can load previously saved task using **Load Settings...** button. If you have a license for the product, please enter license key in the window that opens when you click **Enter License Key...** button.

Number and type of steps in the wizard depends on the type of operation performed.

2. Connecting to SharePoint site

Regardless of the type of operation selected you will need to connect to the source and / or the target SharePoint site. To do this you need to specify the full URL of the site, as well as authentication settings. Authorization can be done either by using the current user account or by specifying user name and password. User name can be specified in form USER@DOMAIN or DOMAIN\USER.



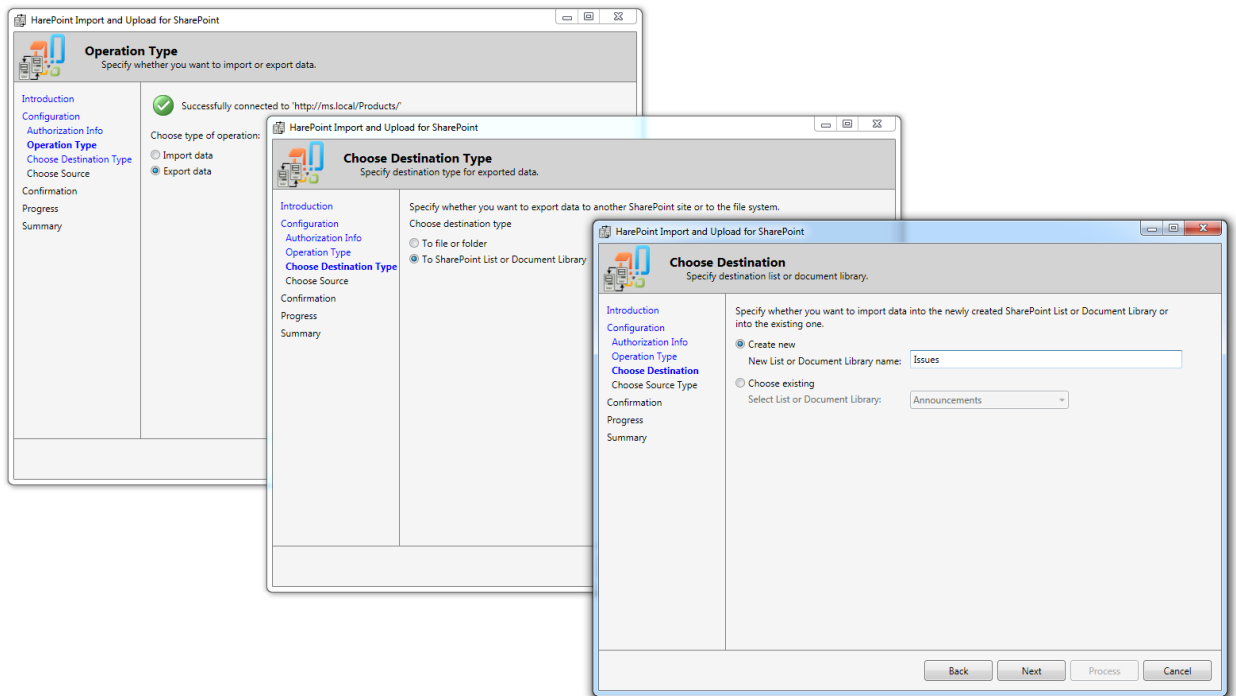
The screenshot shows a Windows application window titled "HarePoint Import and Upload for SharePoint". The main content area is titled "Authorization Info" with the subtitle "Specify SharePoint site address and login information." On the left, there is a navigation pane with the following items: Introduction, Configuration, Authorization Info (highlighted), Operation Type, Choose Destination Type, Choose Source, Confirmation, Progress, and Summary. The main area contains the following fields and controls:

- Specify SharePoint server address and authentication settings.
- SharePoint site URL: A dropdown menu showing "http://ms.local/Products/" with an example below it: "Example: http://sharepoint.local/TeamSite/".
- Authentication options: Two radio buttons, "Interactive user" (unselected) and "Custom account" (selected).
- User Name: A text box containing "MS\test".
- Password: A text box filled with dots.

At the bottom of the window, there are four buttons: "Back", "Next", "Process", and "Cancel".

3. Choosing operation type and destination

On the next two steps you have to choose whether you want to export or import data and specify where you are going to export or import data.

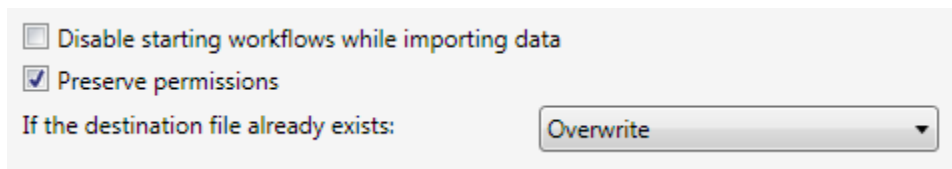


4. Importing data

When you choose import then the following types of data sources are supported:

- XML files previously exported with HarePoint Import and Upload;
- Another SharePoint List or Document Library located on the same or another SharePoint site;
- Folder or network share (available only when importing into existing Document Library).

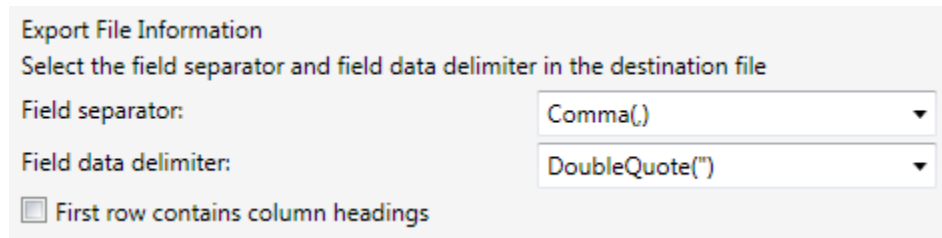
When you choose import then the following options are available:



- **Disable starting workflows while importing data** – temporary disables workflow execution for target list or document library while importing data;

- **Preserve permissions** – transfers permissions of the source list or document library to target. Available only when importing from XML file or another SharePoint list or document library;
- **If the destination file already exists** – the following options are available: *Overwrite*, *Skip*, *Append unique Id*.

When you importing data from CSV the program analyze the source file and try to suggest correct values for field separator and field data delimiter fields. You can specify these values manually:

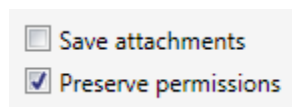


5. Exporting data

When you choose export then the following types of destinations are supported:

- XML file. If necessary a folder named “Exported files” will be created. It will contain list item attachments or documents;
- CSV file (available only when you exporting SharePoint list);
- Folder or network share (available only when you exporting Document Library);
- Another SharePoint List or Document Library located on the same or another SharePoint site.

When you choose export then the following options are available:



- **Save attachments** – specifies whether you want to export attachments when you exporting SharePoint list;
- **Preserve permissions** – specifies whether you want to export or transfer permissions. Unavailable when you exporting list to CSV file or document library to a folder or network share.

When you exporting data into CSV file the following additional options are available:

Export File Information
 Select the field separator and field data delimiter in the destination file

Field separator: Comma(,)

Field data delimiter: DoubleQuote(")

☐ First row contains column headings

6. Mapping list fields

If you transfer data between the two lists or importing data from file into list you may need to map source and target columns. The program analyze source and target field names (if available) and data type and try to map fields automatically. But you can always make changes in field mapping manually:

List Associations
 Map source and target fields.

Map the source import file fields to SharePoint List. You should be sure that the CSV file has been made correctly. If CSV file will have an incorrect format, or will contain incorrect data some items can not be added to the target list.

Source: C:\Export\task.csv
 Target List: Announcements

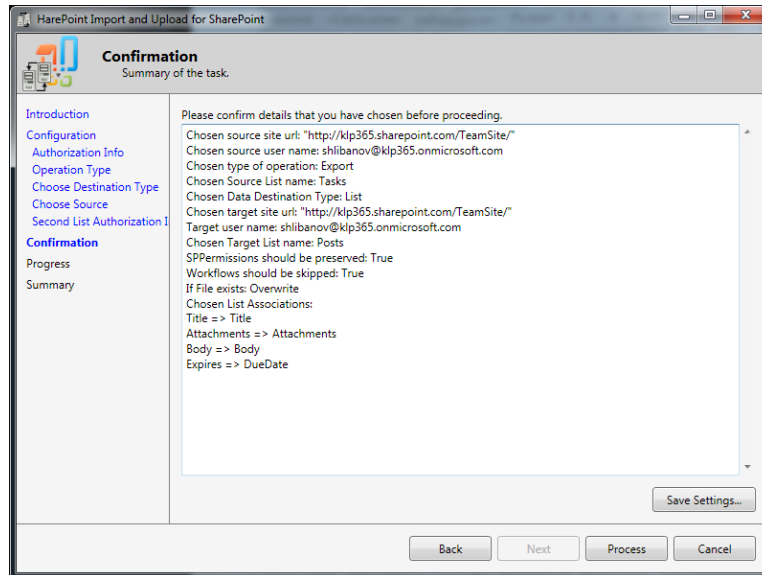
Target Column	Source Column Name	Sample Data
Title*	Title	Resolve ticket #546
Attachments	Empty	
Body	Description	Cannot reproduce problem in our
Expires	Due Date	05.05.2012 0:00:00

Back Next Process Cancel

If there is no corresponding source column for specific target column you can choose *Empty* option that will set empty values for specified target column.

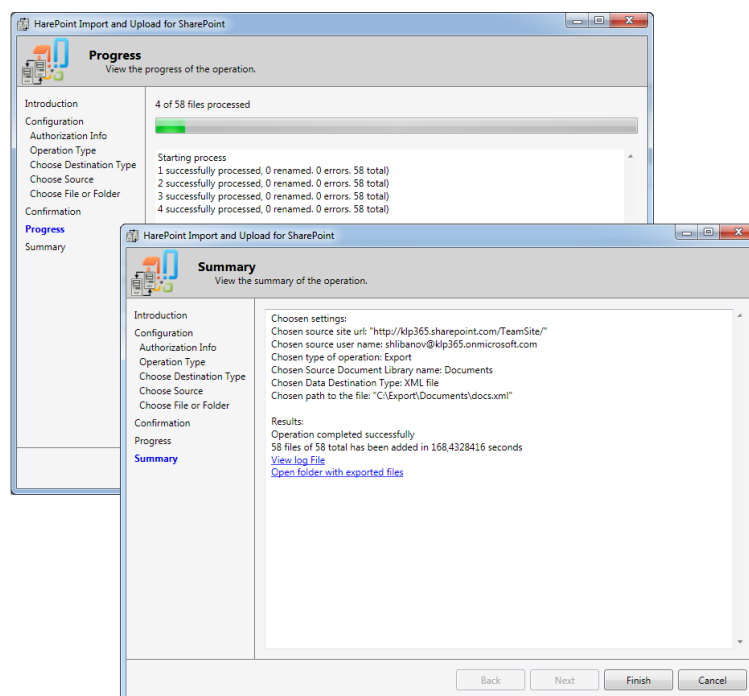
7. Executing import/export operation

On the next steps you can see summary or the task you defined in previous steps:



On the *Confirmation* step you can also save the task for later usage or for using with HarePoint Import and Upload console helper application (see [Section 8](#) for details).

On the *Progress* step you can see the progress of the operation. On the *Summary* step you can see the results of operation and check the log file.



8. Console helper application

Console helper application (HPIUConsole.exe) is used to automatically run tasks previously saved from the main application. By default, the program is located at “C:\Program Files (x86)\HarePoint\HarePoint Import and Upload\” folder. The following options are available:

Usage: HPIUConsole <Required Option> [<Optional Modifier>...]

<Required Options>

/? /help	Help Information
/config "{Config File Name}"	Executes program using settings from config file (full path to the config file is required)

<Optional Modifiers>

-saccount({login},{Password})	Specifies login and password for accessing source SharePoint site
-taccount({login},{Password})	Specifies login and password for accessing target SharePoint site
-we	Enable starting workflows while importing data
-wd	Disable starting workflows while importing data
-pe	Enable preserving permissions
-pd	Disable preserving permissions
-rmeskip	Skip errors (default)
-rmeabort	Abort processing on error

Appendix A. Troubleshooting

A.1 Where is the log file located?

When you experience a problem with HarePoint Import and Upload and plan to contact technical support, be sure to attach the log files to your request. Log files are located at %APPDATA%\HarePointImportAndUpload\ folder (e.g.

C:\Users\<username>\AppData\Roaming\HarePointImportAndUpload\HarePointImportAndUpload.log).